



Vincent-George

Project name: Northcote Point
Client: M & K
Brief: Garden design



OVERVIEW

This detached, three bedroom, bungalow was purchased by the current owners in 2020. They have since renovated the kitchen & open plan living space, along with freshening up the overall aesthetic of the property. They are now looking to replace the retaining wall at the front of the house and in-turn would like to consider options for the whole garden space at the same time.

The clients consider their aesthetic to be contemporary and minimal, preferring the use of neutral tones, black and white.

The key elements the garden must provide include:

- a front garden that ties in with the internal look of the house
- is easy maintenance
- creates a more defined and pleasing entrance
- enhances the decking & entertaining space already available





Light wood tones + black/white furnishings



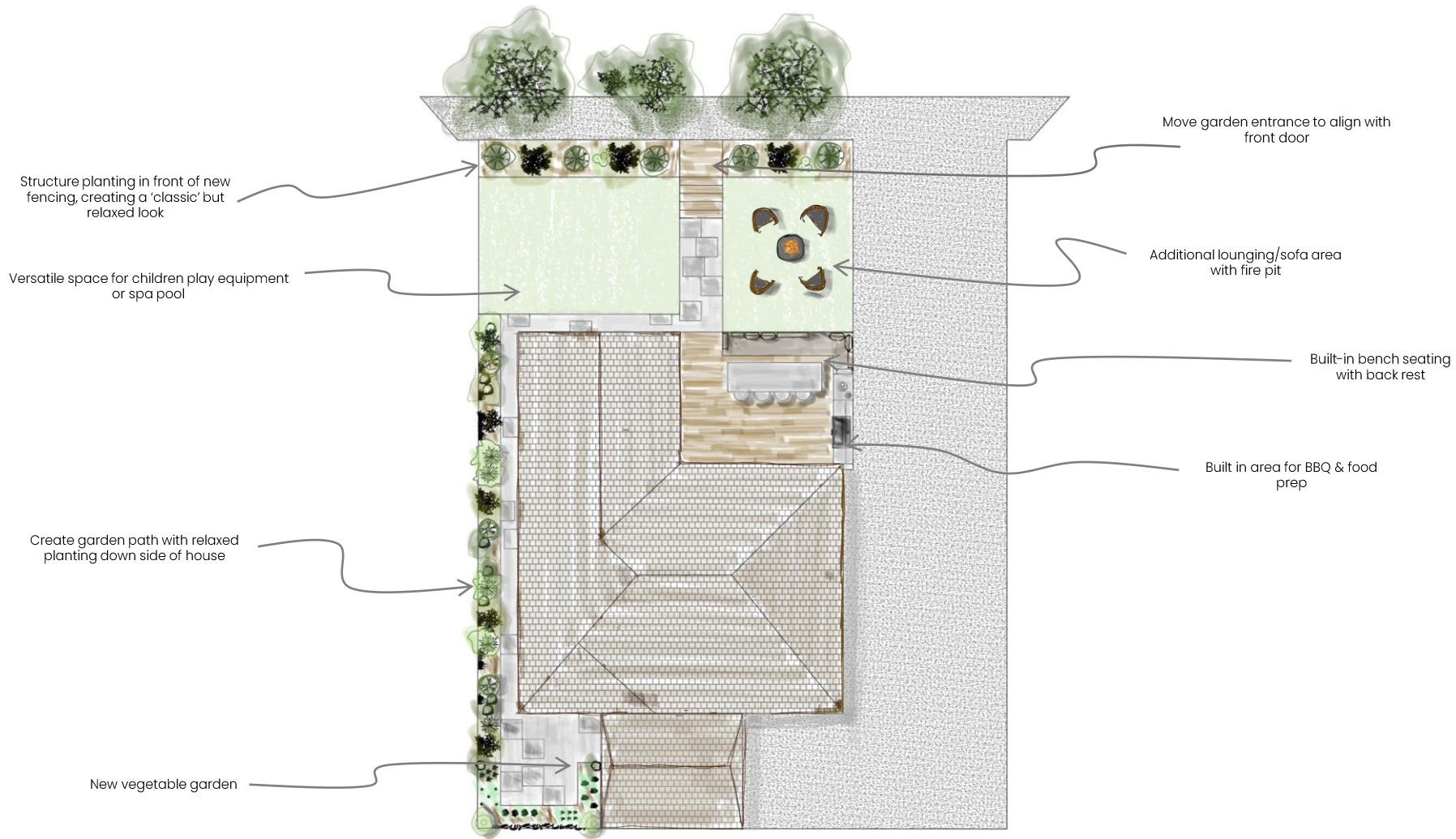
Light concrete finishes + grasses



Vegetable garden

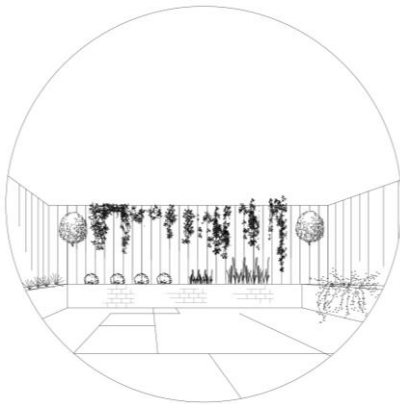


Mix of relaxed planting + box hedging for a combination of structure + fun

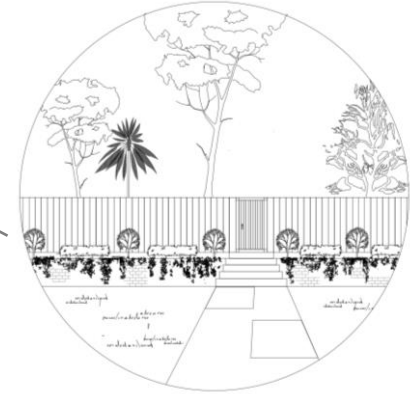
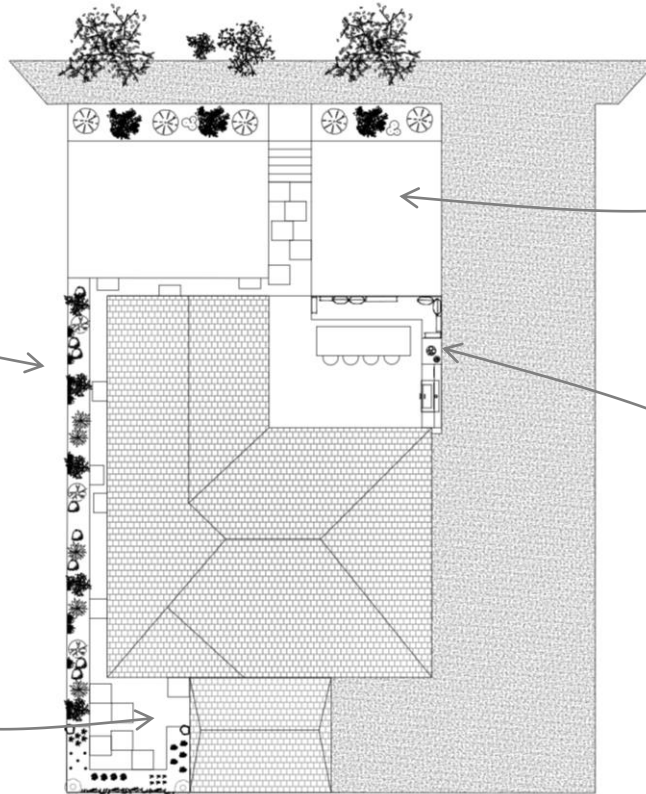




Pathway planting



Vegetable garden



Front entrance + planting



Seating + entertaining area



1



2



4



3



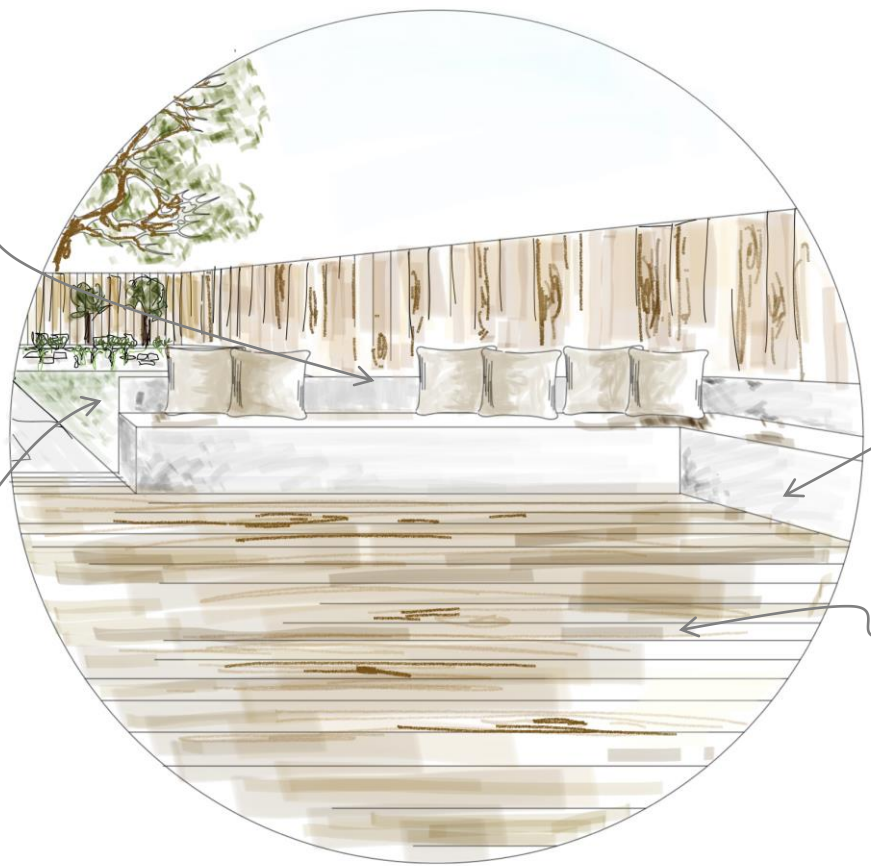
- 1. Oak panel fencing
- 2. Concrete posts
- 3. Dark grey skinny brick with mid-grey grout
- 4. Light coloured concrete



1. Rambling white rose
2. Olive tree
3. Box hedging
4. Lawn turf



1



2



4

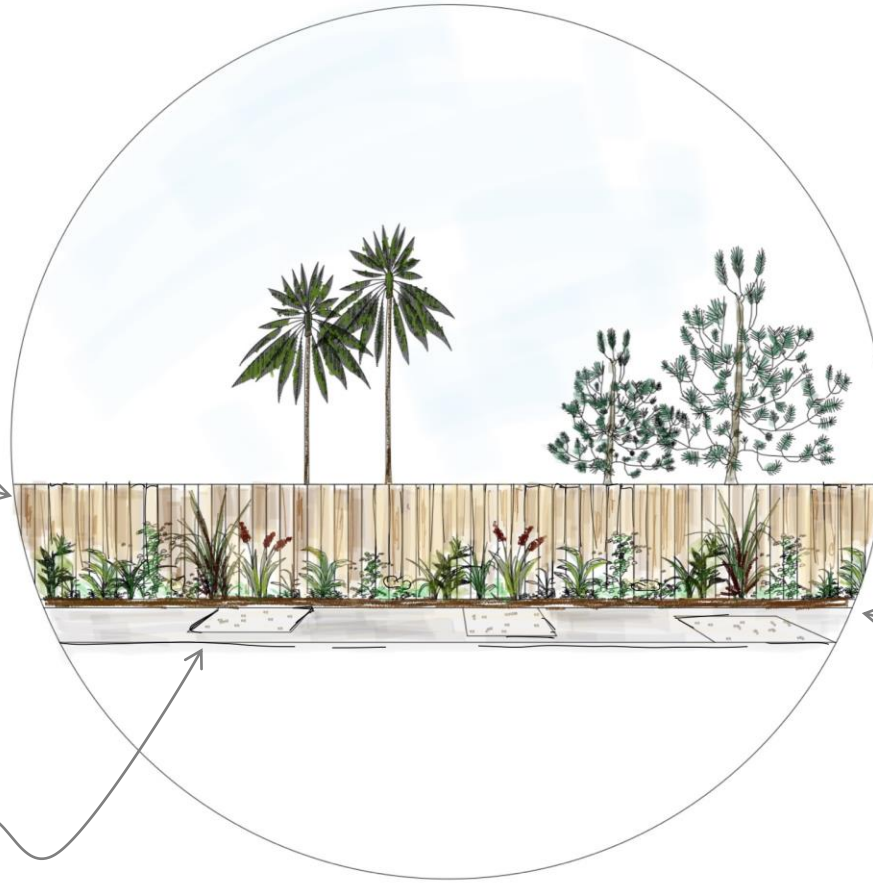


3

- 1. Built in wood/concrete banquette seating
- 2. BBQ area - black panelling
- 3. Concrete dining table & benches
- 4. Arm chairs + firepit for grass patio area



1



3



2

1. Oak panel fencing
2. Timber sleeper
3. Light coloured concrete



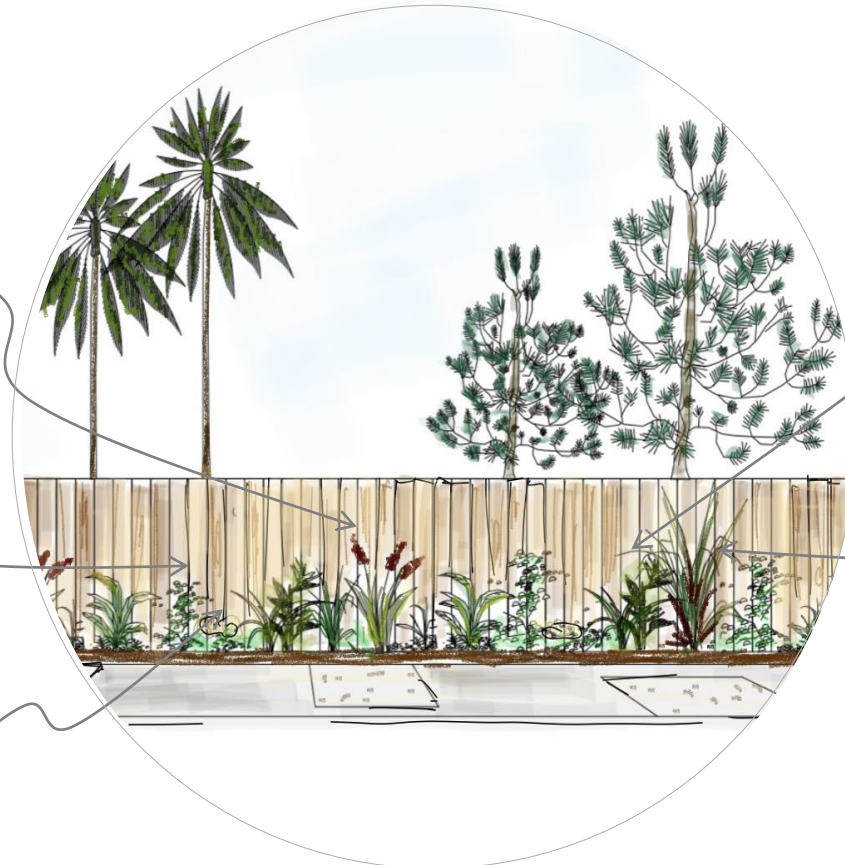
1



2



3



5



4

4

- 1. Sanguisorba 'Tanna' Burnet
- 2. Panicum virgatum 'Heavy Metal' switch grass
- 3. Colocasia esculenta 'Black Magic'
- 4. Lavender Sensation White
- 5. Box hedging, planted in single or double plants

*planted as a mix to create a more relaxed feel - 'meandering path'



1



2



3



1. Oak panel fencing
2. Dark grey skinny brick with mid-grey grout
3. Light coloured concrete



1



2



6



5



3



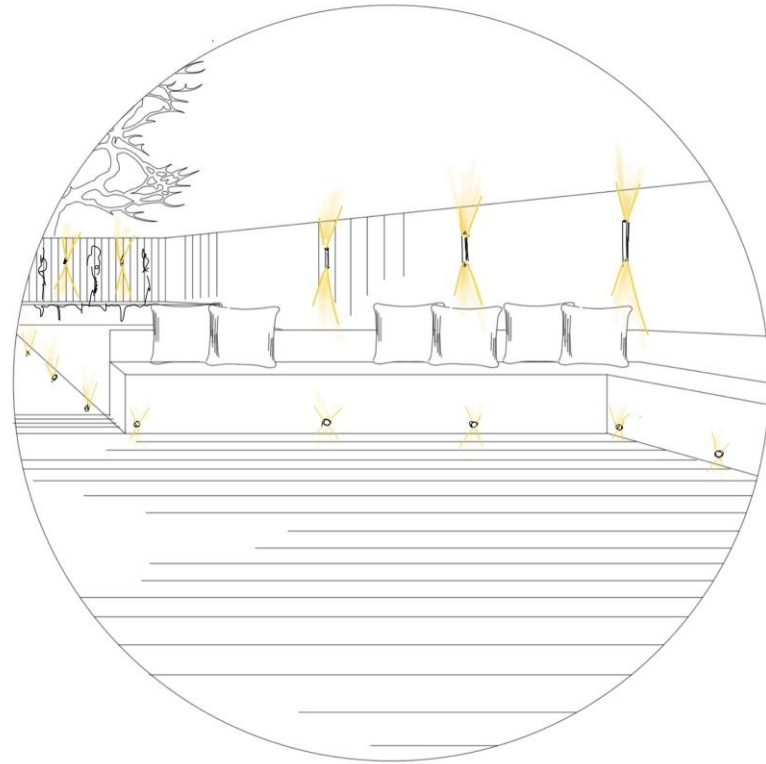
4



- 1. Grape vine
- 2. Lemon trees
- 3. Carrots
- 4. Strawberry
- 5. Tomatoes
- 6. Lettuce



Front entrance + planting



Seating + entertaining area



Vegetable garden



Pathway planting